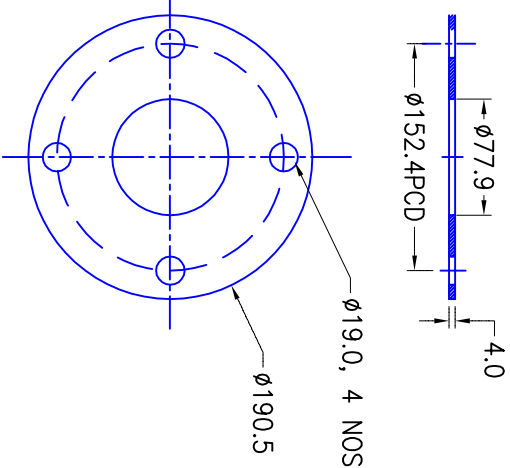


ASSBLY OF CWS CONNECTION SCHEME (NEUTRALIZER-2)

DETAIL-2
TEFLON FLANGE



DETAIL-4
M12 NUT

DETAIL-6
M12 WASHER

SORF BLANK FLANGE
(Need for pressure test)

NO	NAME	QUANTITY	MATERIAL	RIVISION
9	SORF BLANK FLANGE	2	SS316	
8	EXPANDER(40NB TO 80NB)	1	SS316	
7	SS BRAIDED HOSE	1	SS316	
6	M12 WASHER	8	SS316	
5	M12 BOLT	4	SS316	
4	M12 NUT	4	SS316	
3	BUSH	4	FRP(G10)	
2	TEFLON FLANGE	1	TEFLON	
1	WELDING NECK RF FLANGE 80NB	1	SS316	

DRG.NO	▽ 8-25	▽▽ 1.6-8	▽▽▽ 0.025-1.6	▽▽▽▽ < 0.025	REVISION COLUMN										ASSY GROUP:		INSTITUTE FOR PLASMA RESEARCH			
CO-ORDINATED BY					REV	ZONE	DESCRIPTION	DATE	REMARKS	APPROVED BY	ALL DIMENSIONS ARE IN 'mm' UNLESS OTHERWISE STATED				BHAT, GANDHINAGAR-382 428.					
MACHINING DEVIATIONS FOR NON-TOLERANCED DIMENSIONS											SCALE	1:1	DATE	TITLE						
LENGTH IN mm OF SHORTER SIDE OF ANGLES											DRAWN	SACHIN	21/5/15	NBI CWS CONNETION SIDE NEUTRALIZER-2						
UPTO 10	10-50	50-120	OVER 120-400								CHECKED	MR.JANA		REF DRG NO:						
±1°	±0°-30°	±0°-20°	±0°-10°								APPROVED			REV						
											DRG.NO	SST-1/NBI/CWS/Flange Connection	SHEET 3 OF 6							